

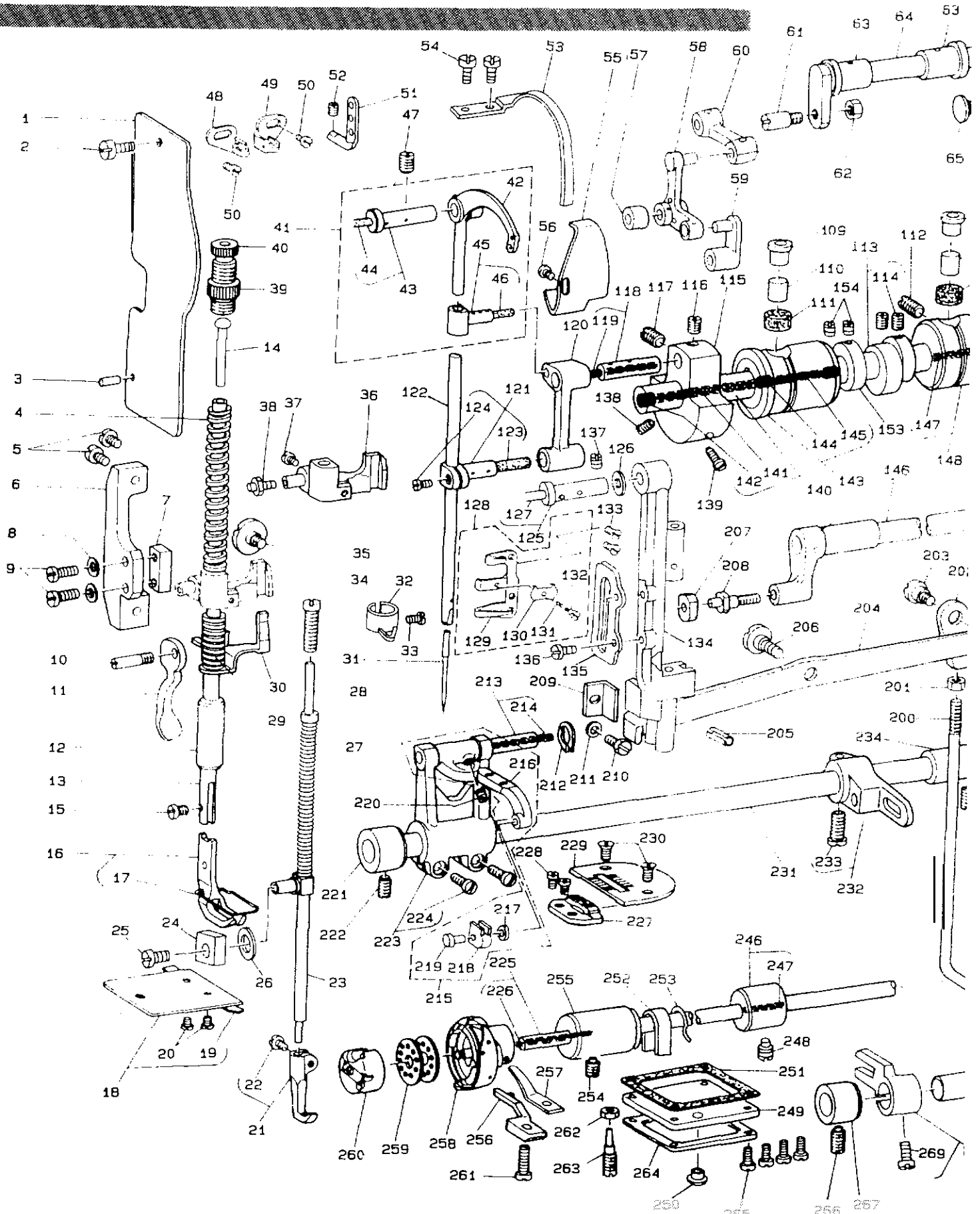
1-Needle,Lockstitch,Compound Walking Foot Needle Feed
Industrial Sewing Machine with a Large Bobbin
一本針本縫総合送りマシン

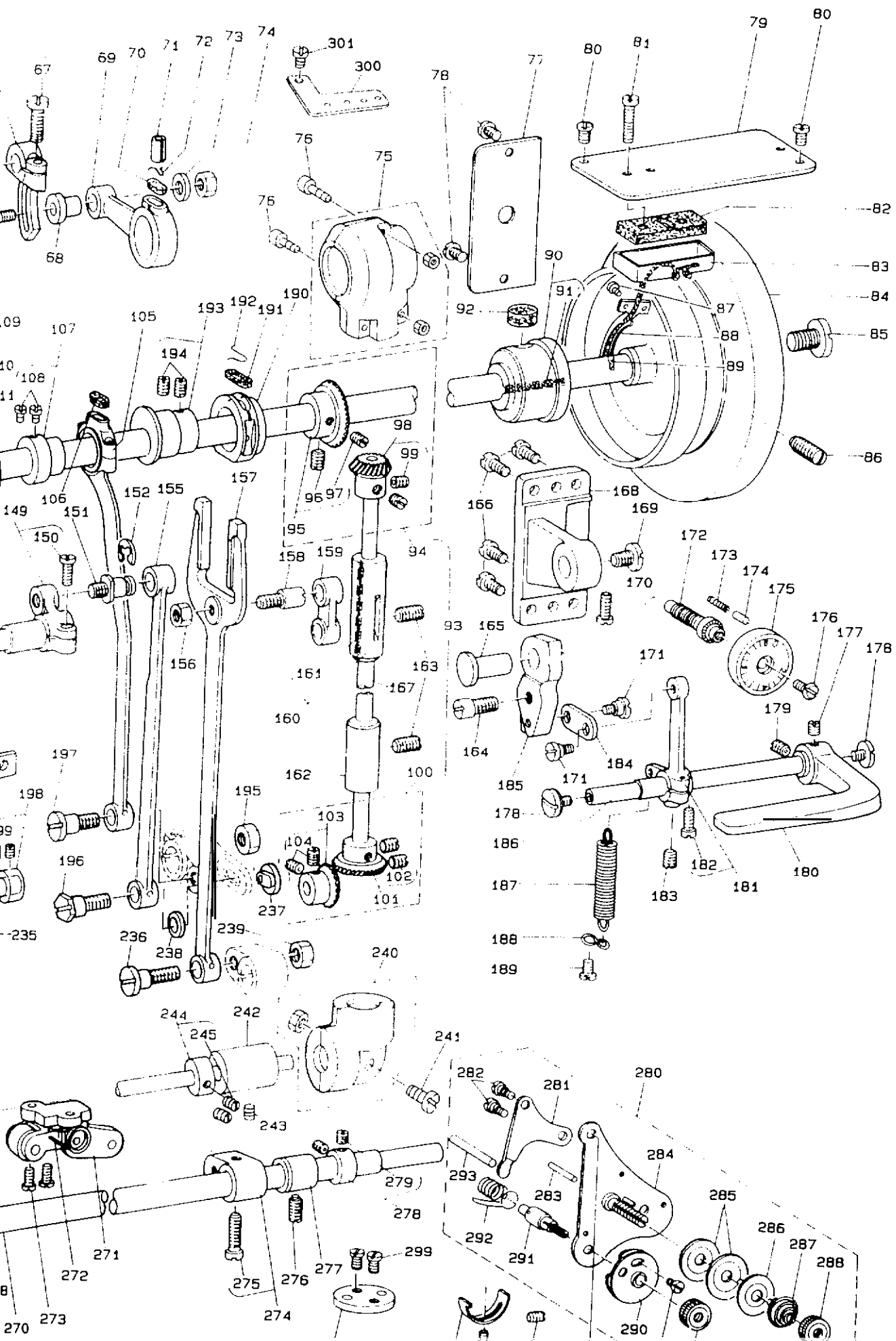
JUKI

DNU-241H

PARTS LIST

BE241H20PJA
No.0146-02





ITEM	QTY	DESCRIPTION
1	1	...
2	1	...
3	1	...
4	1	...
5	1	...
6	1	...
7	1	...
8	1	...
9	1	...
10	1	...
11	1	...
12	1	...
13	1	...
14	1	...
15	1	...
16	1	...
17	1	...
18	1	...
19	1	...
20	1	...
21	1	...
22	1	...
23	1	...
24	1	...
25	1	...
26	1	...
27	1	...
28	1	...
29	1	...
30	1	...
31	1	...
32	1	...
33	1	...
34	1	...
35	1	...
36	1	...
37	1	...
38	1	...
39	1	...
40	1	...
41	1	...
42	1	...
43	1	...
44	1	...
45	1	...
46	1	...
47	1	...
48	1	...
49	1	...
50	1	...
51	1	...
52	1	...
53	1	...
54	1	...
55	1	...
56	1	...
57	1	...
58	1	...
59	1	...
60	1	...
61	1	...
62	1	...
63	1	...
64	1	...
65	1	...
66	1	...
67	1	...
68	1	...
69	1	...
70	1	...
71	1	...
72	1	...
73	1	...
74	1	...
75	1	...
76	1	...
77	1	...
78	1	...
79	1	...
80	1	...
81	1	...
82	1	...
83	1	...
84	1	...
85	1	...
86	1	...
87	1	...
88	1	...
89	1	...
90	1	...
91	1	...
92	1	...
93	1	...
94	1	...
95	1	...
96	1	...
97	1	...
98	1	...
99	1	...
100	1	...

REF. NO.	QTY	PART NO.	DESCRIPTION	QTY
221	1	B1604-141-H90	BUSHING, FRONT	1
222	1	SS-8150710-SP	SCREW 15/64-28 L=7	1
223	1	B1603-141-HA0	FEED ROCKER ASM.	1
224	1	SS-7121410-SP	SCREW 3/16-28 L=14	1
225	1	B1201-241-HA0	HQX DRIVING SHAFT ASM.	1
226	1	CS-2000000-00	OIL WICK	1
227	1	B1613-241-E9R	FEED DOG 4X2.5 WITH DITCH	1
228	1	SS-4080620-TP	SCREW 1/8-44 L=6	2
229	1	B1105-241-H00-A	THROAT PLATE	1
230	1	SS-2110920-TP	SCREW 11/64-40 L=8.5	2
231	1	B1601-141-H00	FEED ROCK SHAFT	1
232	1	B1605-241-H00-A	FEED ROCK SHAFT CRANK	1
233	1	SS-7151610-SP	SCREW 15/64-28 L=10	1
234	1	118-47308	BUSHING, REAR	1
235	1	SS-8150710-SP	SCREW 15/64-28 L=7	1
236	1	SP-1000951-SP	HINGE SCREW D=10 H=9.5	1
237	1	B3009-141-H0B	NUT	1
238	1	WF-0742016-SF	WASHER	1
239	1	NS-6680410-SF	NUT 9/32-28	1
240	1	B1307-271-0A0	PINION CASE ASM.	1
241	1	SM-0051410-SC	SCREW M5X0.8 L=14	1
242	1	B1806-271-000	LOWER SHAFT BUSHING, REAR	1
243	1	SS-8150710-SP	SCREW 15/64-28 L=7	1
244	1	CS-079101A-SH	THRUST COLLAR ASM. D=7.94 W=10	2
245	1	SS-8110520-TP	SCREW 11/64-40 L=4.5	1
246	1	B1803-141-HA0	BUSHING ASM., INTERMEDIATE	1
247	1	CS-2020000-00	OIL WICK	1
248	1	SS-8150710-SP	SCREW 15/64-28 L=7	1
249	1	B1151-141-H00	LUBRICATING OIL PUMP COVER	1
250	1	TA-0750404-R0	PLUG D=7.5 L=3.5	1
251	1	B1152-141-H00	GASKET	1
252	1	B1155-141-H00	OIL PIP	1
253	1	B1156-141-H00	FELT HOLDER	1
254	1	SS-8151150-SP	SCREW 15/64-28 L=10.5	1
255	1	B1802-141-H00-A	DRIVING SHAFT BUSHING, FRONT	1
256	1	B1835-241-H00	BOBBIN CASE POSITIONING FINGER	1
257	1	B1829-241-H00	THREAD PRESSER PLATE	1
258	1	B1830-241-HA0	HOOK ASM.	1
259	1	B9117-201-000	BOBBIN	1
260	1	B1837-241-H00	BOBBIN CASE	1
261	1	SS-6111620-SP	SCREW 11/64-40 L=16.0	1
262	1	NS-6110530-SP	NUT 11/64-40	1
263	1	B1234-512-000-A	OIL ADJUSTING SCREW	1
264	1	B1154-141-H00	OIL PUMP COVER	1
265	1	SS-6111210-SP	SCREW 11/64-40 L=12	4
266	1	SS-8150710-SP	SCREW 15/64-28 L=7	1
267	1	B1604-141-H00	BUSHING, FRONT	1
268	1	D1704-241-E00	UP AND DOWN FEED FORKED	1
269	1	SS-7111120-SP	SCREW 11/64-40 L=10.5	1
270	1	B1601-141-H00	FEED ROCK SHAFT	1
271	1	B3402-141-HA0-A	BELL CRANK BRACKET ASM.	1
272	1	B3406-141-H00	SPRING	1
273	1	SS-7120910-SP	SCREW 3/16-28 L=9	2
274	1	B1703-241-HA0	DRIVING SHAFT CRANK ASM., REAR	1
275	1	SS-6151920-SP	SCREW 15/64-28 L=19.0	1
276	1	SS-8151550-SP	SCREW 15/64-28 L=15	1
277	1	118-47308	BUSHING, REAR	1
278	1	CS-111101C-SH	THRUST COLLAR ASM. D=11.11 W=10	1
279	1	SS-8660610-TP	SCREW 1/4-40 L=6	1
280	1	B3121-241-HA0	TENSION RELEASE LEVER ASM.	1
281	1	B3134-051-000	TENSION RELEASE LEVER	1
282	1	SD-0470281-SP	HINGE SCREW D=4.7 H=2.8	1
283	1	B3127-051-000	TENSION RELEASE PIN, SHORT	1
284	1	B3124-241-HA0	TENSION STUD ASM.	1
285	1	B3126-051-000	TENSION DISC	1
286	1	B3132-051-000	TENSION DISC HOLDER	1
287	1	B3129-526-000	TENSION SPRING (1.2)	1
288	1	B3125-012-000	THREAD TENSION NUT	1
289	1	SS-4080610-SP	SCREW 1/8-44 L=6.4	1
290	1	B3137-051-0A0	TAKE-UP SPRING GUIDE DISC ASM.	1
291	1	B3123-051-000	TAKE-UP SPRING STUB	1
292	1	B3128-051-000	THREAD TAKE-UP SPRING, A	1
293	1	B3122-053-000	TENSION RELEASE BAR	1
294	1	SS-7110720-SP	SCREW 11/64-40 L=7	1
295	1	SS-8111251-SP	SCREW 11/64-40 L=12.0	1
296	1	B3138-512-000	TAKE-UP SPRING ADJUSTING PLATE	1
297	1	SS-7090520-SP	SCREW 9/64-40 L=4.5	1
298	1	B1103-141-H00	SCALE BASE PLATE	1
299	1	SS-7110720-SP	SCREW 11/64-40 L=7	2
300	1	196-61607	TENSION THREAD LEAD PLATE	1
301	1	SS-4120615-SP	SCREW 3/16-28 L=6	1

Ed Raichert, Inc
 Industrial Sewing Equipment
 3517 N 42nd Ave Phoenix, Arizona 85019
 ph:602-272-2301 ph 800-422-3153 www.raichert.com
 fax 602-272-0509 email les@raichert.com

JUKI CORPORATION
 INTERNATIONAL SALES DIVISION
 8-2-1, KOKURYO-CHO,
 CHOFU-SHI, TOKYO 182, JAPAN

PHONE: 03 (3430) 4001-S
 FAX: 03 (3430) 4903, 4909, 4914
 TELEX: J22967